



SECURING YOUR ASSETS?

WE ARE YOUR FIRST LINE OF DEFENSE.

Smart Locks | **Sensors** | Analytics



**KEYLESS
SOLUTION**



**SMART ACCESS
CONTROL**



**FULL AUDIT
TRAIL**



**REAL-TIME
MONITORING**



**MOBILE AND
WEB PORTAL**



WM Alpha Smart Padlock

Designed to protect critical enclosures

- Bluetooth keyless access
- Resistant to physical attacks and harsh environments
- Multiple users & lock activity log
- 20,000+ operations
- 3-layer power backup with 5-year battery lifespan (replaceable battery), supercapacitor in case of power failure & external magnetic bypass port
- Low-battery notification on back-end & smartphone



WM Smart Cabinet Lock

Designed to protect indoor and outdoor critical cabinets

- Bluetooth keyless access
- Resistant to physical attacks and harsh environments
- Multiple users & lock activity log
- Outdoor & Indoor cabinets, data centre racks
- Designed for retrofit, installed in less than 30'
- Tampering & forcing alarm
- Powered by DC 5V cable
- Power bank can be used in case of power outage



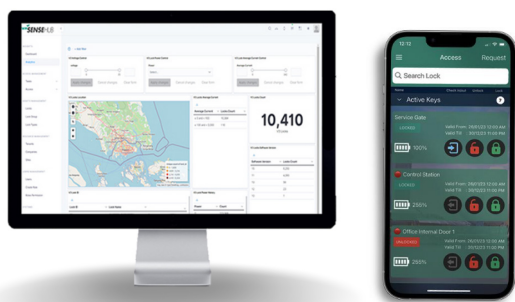
WM Smart Logistics Lock

Designed to protect mobile and static assets

- Bluetooth keyless access
- Full audit trail allows visibility on access/duration records
- Lighter weight
- 20,000+ operations
- 2-year lifespan

WMSenseHub

Manages and controls WM smart locks via Bluetooth. Grants and revokes entry authorizations, while keeping track of all lock operations.

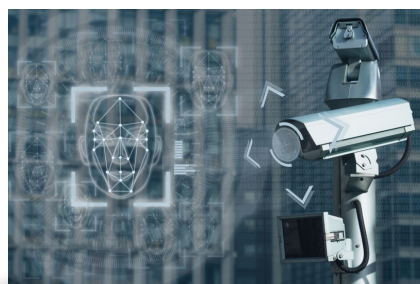


- Login with face recognition/biometric
- Integrate cctv video streaming for 24/7 site visibility
- Managing and monitoring access remotely
- Get informed of your lock's status, battery and location
- Track all lock operations
- Get insights and analytics based on the collected data

WMVision

WM Vision's face recognition feature restricts the operation of WM Smart Locks to registered personnel, making it a multi-factor authentication system.

- Multi-factor authentication with facial recognition
- Keeps track of people count, profiling & time spent on site
- Configurable thresholds and alerts
- Tail-gating detection
- Lock state
- Abnormal behaviour detection



Contact us!

Security Marketing Sdn. Bhd.

☎ 603-4107 1226

✉ enquiry@smsb.com.my